

- **New subscription orders are on a rolling renewal basis from the date of order processing. Issues published in the same year but prior to the start of the subscription must be purchased separately.**

- **Renewals extend from date of expiry so there is no interruption of service. (Orders received after December 31, 2021 will be on an anniversary schedule.**

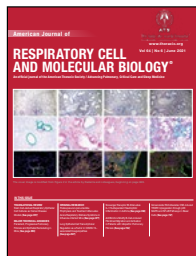
- **Canada and Mexico are charged international pricing, not domestic.**

- **We offer an agency discount. Please contact the Subscriptions department for more information: subscriptions@thoracic.org**



AJRCCM Mission Statement: To publish the highest-quality original papers, reviews, and clinical trials in respiratory, critical care and sleep medicine to foster advances in translational research and clinical practice.

- **Volumes for 2022:** 205 & 206
- **Subscription Period:** Anniversary
- **Terms:** Bi-weekly (24 times per year)
- **Formats:** Online, online plus print or print only



AJRCCM Mission Statement: To publish papers that report significant and original observations in the area of respiratory and lung cell biology. The focus of the Journal includes cellular, biochemical, molecular, developmental, genetic, and immunologic studies in health and in acute and chronic disorders related to the respiratory system and sleep.

- **Volumes for 2022:** 66 & 67
- **Subscription Period:** Anniversary
- **Term:** Monthly (12 times per year)
- **Format:** Online only
- **Archives:** Subscribers have online access to articles from 1989



Annals ATS Mission Statement: To publish original clinical, epidemiological, and health services research related to respiratory, sleep, critical care medicine, and population health. The journal also aims to educate pulmonary, sleep, and critical care providers about clinical care, and publish commentary on public health, environmental health, global health, health policy, and medical education/training relevant to ATS Members.

- **Volumes for 2022:** 19
- **Subscription Period:** Anniversary
- **Term:** Monthly (12 times per year)
- **Format:** Online
- **Archives:** Subscribers have online access to articles from 2004

- **ATS Legacy Content includes articles from 1917 to 1997. Legacy Content Pricing:**
 Part I - 1917 – 1959 = \$3,500
 Part II - 1959 – 1997 = \$1,500
 Combo: 1917 – 1997 = \$4,500

Legacy Content

Institutions can purchase access to AJRCCM content dating back to its inception in 1917, when it was titled American Review of Tuberculosis. A separate one-time fee of \$1,500 - \$4,500 required for perpetual access. The Combo Legacy Content option provides permanent access to the complete set of volumes for the American Review of Tuberculosis, American Review of Tuberculosis and Pulmonary Disease, and American Review of Respiratory Disease (20,000 articles).

2022 ATS Institutional Subscription Rates

All institutions are able to access the journals online at www.atsjournals.org. Online accounts can be authenticated via IP to enable simultaneous access for multiple users. Subscription prices are tailored to fit the appropriate category and size of each organization. Multi-site and consortia prices are available. An agency discount will be applied to all orders received via a valid subscription agent. To receive a quote, please email subscriptions@thoracic.org.

2022 Subscription Tier Restructure

All payments should be remitted in USD; full payment must be submitted before service can commence. 2022 rates are effective December 1, 2021.

HOSPITAL/HEALTH SYSTEMS

Tier	Institution	Price Online-Only	Price Print + Online (Int'l)	Price Print + Online (US)	Print Only
Tier 1*	Single hospital with up to 500 beds, non-research intensive	\$756.00	\$1001.00	\$796	N/A
Tier 2*	Single hospital with 501 - 1000 beds, non-research intensive	\$2,430.00	\$2,797.00	\$2,648	N/A
Tier 3*	Single hospital with greater than 1,000 beds, research intensive	Call for pricing	Call for pricing	Call for pricing	N/A
Tier 4**	Treatment centers/Speciality Clinics	Call for pricing	Call for pricing	Call for pricing	N/A
Tier 5**	Health systems/networks with 2 or more hospitals	Call for pricing	Call for pricing	Call for pricing	N/A
Consortia		Call for pricing	Call for pricing	Call for pricing	N/A

* Pricing is subject to change based on research intensive

** Pricing based on number of beds/ type of institution

NOTE: Prices are subject to change without notice. Tier descriptions are for illustrative purposes only. Final tier assignment is subject to publisher's approval.

CORPORATE

Tier	Institution	Price Online-Only	Price Print + Online (Int'l)	Price Print + Online (US)	Print Only
Tier 1	Biotech, single site	\$5,452.00	\$6,139.00	\$5,738.00	N/A
Tier 2	* Biotech, multi- site	Call for pricing	Call for pricing	Call for pricing	N/A
Tier 3	Biotech, global	Call for pricing	Call for pricing	Call for pricing	N/A
Tier 4	Pharmaceutical, single site	\$5,609.00	\$6,316.00	\$5,903	N/A
Tier 5	* Pharmaceutical, multi- site	Call for pricing	Call for pricing	Call for pricing	N/A
Tier 6	Pharmaceutical, global	Call for pricing	Call for pricing	Call for pricing	N/A

* Pricing based on number of sites

** Prices are subject to change without notice. Tier descriptions are for illustrative purposes only. Final tier assignment is subject to publisher's approval.

See next page for academic and individual subscription rates.

ACADEMIC

Tier	Institution	Price Online-Only	Price Print + Online (Int'l)	Price Print + Online (US)	Print Only
Tier 1	Associate's granting colleges, or two-year special focus institutions. Professional membership organizations, industry trade organizations(staff only). Public libraries.	\$756.00	\$ 1,001.00	\$ 796.00	N/A
Tier 2	Baccalaureate granting college or master's granting university. Health policy or advocacy non-profit organization (staff). Medical specialty certification board(staff).	\$2,430.00	\$2,797.00	\$2,648.00	N/A
Tier 3	Government agency or ministry. Government research institute or network. Government health organization. National library. Doctoral granting university.	\$5,399.00	\$ 6,080.00	\$ 5,683.00	N/A
Tier 4	Research institute. University with major biomedical research. University with a single medical school, with/ without affiliated hospital(s) that share e-resources.	\$10,796.00	\$ 12,501.00	\$ 11,364.00	N/A
Tier 5	* University with two or more medical schools, with/ without affiliated hospital(s) that share e-resources.	Contact subscriptions@thoracic.org	Contact subscriptions@thoracic.org	Contact subscriptions@thoracic.org	N/A
Consortia		Contact subscriptions@thoracic.org	Contact subscriptions@thoracic.org	Contact subscriptions@thoracic.org	N/A

* Pricing is based on student population and/or bed count

** Prices are subject to change without notice. Tier descriptions are for illustrative purposes only. Final tier assignment is subject to publisher's approval.

2022 Individual Subscription Rates

	Online Only	Online + Print (USA)	Online + Print (Int'l)†
AJRCCM	\$285.00	\$718.00	\$911.00
AJRCMB*	\$171.00	N/A	N/A
AnnalsATS	\$82.00	\$276.00	\$398.00

2022 Single-Issue Rates

Single-Copy Rates	AJRCCM	AJRCMB*	AnnalsATS
Domestic	\$50	\$100	\$50
International	\$60	\$120	\$60

Legacy Content

ATS Legacy Content: includes articles from 1917 to 1997

Legacy Content Pricing:

Part I - 1917 – 1959
\$3,500

Part II - 1959 – 1997
\$1,500

Combo: 1917 – 1997
\$4,500

* Indicates on demand print availability. Please email subscriptions@thoracic.org for a quote.

† Due to postal problems, print subscriptions are no longer available in India. Please contact the Subscriptions department for more information: subscriptions@thoracic.org

Note: Our annual conference abstract book is no longer available for purchase in print. It is available from 2009 to present on the AJRCCM website (atsjournals.org/series/AJRCCM-conference).

To Order

Please contact our
Subscriptions department:

- Phone: 1-212-315-8687
- Fax: 1-212-315-6498
- Mail: 25 Broadway, 4th Floor,
New York, NY 10004, USA
- For ICEDIS Orders:
subscriptionpayments@thoracic.org
- Email: subscriptions@thoracic.org

Place an Order

To place a subscription order for any
ATS publication, please make sure to
include the information outlined below.
Payments by wire transfer/ACH or
ICEDIS and credit card are accepted. If a
wire transfer is required, please contact
us at
subscriptionpayments@thoracic.org

1. Name of publication

2. Institutional administrator information, including:

- a. First and last name, title
- b. Email address
- c. Telephone number

3. Institution information

- a. Name
- b. Website URL
- c. IP addresses (for subscription)
- d. Full mailing address

4. Institution type from one of the following:

- a. Academic
- b. Corporate
- c. Government
- d. Medical
- e. Public/nonprofit

Payment Terms

- **Prepayment:** Required for all orders. Payments can be made by wire transfers (contact for bank information), or by credit card. For prepayment sent via wire transfer, orders must be received in icedis or csv format and payment advice must accompany all orders
- **Accepted Credit Cards:** Visa, MasterCard, Discover, Amex, Diners, JCB
PLEASE DO NOT SEND CREDIT CARD INFORMATION VIA EMAIL.
REQUEST CREDIT CARD PAYMENT LINK AT
subscriptions@thoracic.org
- **ALL payments with orders accompanied in ICEDIS/CSV format** must be sent to subscriptionpayments@thoracic.org
- **Shipping and Handling:** This is included in pricing for domestic and international orders.
- **Subscription Agencies:** A discount is given to subscription agencies. All orders received via agents must have end-user information; otherwise regular rates will be applied to the order. For more details, contact us at subscriptions@thoracic.org.
- **Proforma Invoices:** When requested, a proforma invoice or a price quote will be sent. Please contact subscriptions@thoracic.org.

Customer Service

- **Online Access:** All subscribers are responsible for activating their account at www.atsjournals.org. Please make sure to insert your email with the order form so that an ATS ID number can be sent to you and the account can be activated.
- **Missing Issues:** Please submit all claims to subscriptions@thoracic.org. Please be sure to include the ATS ID number, the order number (for agents), as well as the volume and issue number of claimed issue(s). Claims are only fulfilled for missing issues within three months of the publication date and can only be processed once, without exceptions.
- **Change of Address:** This request must be made in advance to ensure that the journals will be sent to the correct address. If the request is sent late, the journals will be sent to the newest address by the next issue date. Submit all change of address inquiries to subscriptions@thoracic.org with your ATS ID and new address information.
- **Refund Policy:** Subscriptions may be cancelled for a 100% refund if the request is received before the start of the subscription period. No refunds will be issued after the subscription has begun.

CONTACT US!

Mail: ATS Subscriptions

25 Broadway, Fl. 4

New York, NY 10004

Call: 212-315-8687

E-mail: subscriptions@thoracic.org

Exclusive Distributors

GREECE:

InterOPTICS

1 Ellis street & Vouliagmenis Avenue, Dafni, Athens 17235, Athens, Greece
 P: +30 210 9027203
 F: +30 210 9753403
 Email: ats@interoptics.com.gr

Coverage territory:

**Western Europe
 Nordic EU, DACH,
 CEE (EU and non-EU),
 SEE**

*Not included sales territory/
 countries/area: Portugal, Spain,
 Russia (& CIS), Israel and Turkey.*

INDIA:

Rhino International

Agencies will handle all institutional and individual subscriptions, and single-issue requests for users in the India territories.

Orders should be sent to:
**Rhino International
 Agencies**

74, Mahavir Centre
 Navi Mumbai Maharashtra
 India 400 703
 P: +91 22 2789 2627
 F: +91 22 2789 2568
 Email: ats@riabom.com

JAPAN:

Nankodo co. Ltd will handle all institutional, consortia, individual subscriptions, and single issue requests for users in Japan.

Orders should be sent to:

Nankodo co., Ltd.
 42-6 Hongo 3-Chome
 Bunkyo-ku
 Tokyo 113-8410 Japan
 Email: journal@nankodo.com.jp

LATIN AMERICA, CARIBBEAN AND IBERO-AMERICA (PORTUGAL & SPAIN):

Dot Lib Information, LLC, will handle all institutional and individual subscriptions, and single-issue requests for Latin America, the Caribbean and Ibero-America (Portugal and Spain).

Orders should be sent to:
Dot Lib Information, LLC
 Email: info@dotlib.com

American Thoracic Society has appointed **iGroup (Asia Pacific) Ltd** as its exclusive representative in the following territories:

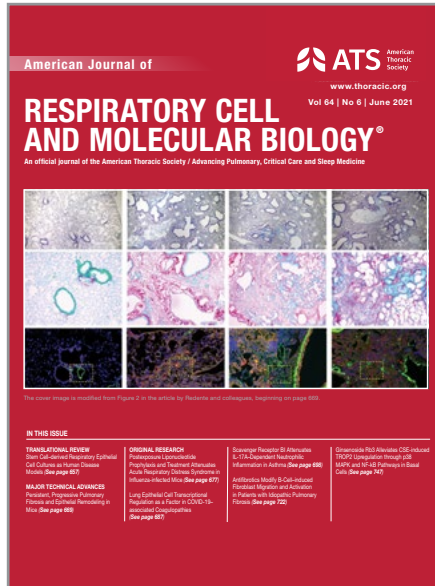
Country	iGroup Office Name	Contact	Email
Australia/New Zealand	iGroup (Australasia) Pty Ltd.	Chloe Lok	chloe.lok@igrouppanz.com
China	iGroup (Asia Pacific) Ltd.	Desmond Tang	desmond@igroup.com.cn
Hong Kong/Macau	Info Access & Distribution (HK) Ltd.	Brian Wu	brian@igroupnet.com
Indonesia	iGroup (Asia Pacific) Ltd.	Helwis	helwis@igroupnet.com
Malaysia/Brunei	Access Dunia Sdn Bhd	Ng Ching Guan	chingguan@accessdunia.com.my
Myanmar	iGroup (Asia Pacific) Ltd.	Jennifer Yong	jennifer.yong@igroupnet.com
Philippines	Libtech Source Philippines Inc.	Leah Sembrano-Bundalian	leah@igroupnet.com
Singapore	InfoHOST Pte. Ltd.	Susan Pey	susanpey@igroupnet.com
South Korea	IDC Asia (iGroup Korea)	Joseph Kim	josephkim@igroupkorea.com
Taiwan	VI Services Ltd.	Hill Chen	hill.chen@igrouptaiwan.com
Thailand	Book Promotion & Service Co. Ltd.	Kittipong Supkongdee	kittipong@book.co.th
Vietnam	iGroup (Asia Pacific) Ltd.	Quy	quy@igroupnet.com

- **New subscription orders are on a rolling renewal basis from the date of order processing. Issues published in the same year but prior to the start of the subscription must be purchased separately.**

- **Renewals extend from date of expiry so there is no interruption of service. (Orders received after December 31, 2021 will be on an anniversary schedule.**

- **Canada and Mexico are charged international pricing, not domestic.**

- **We offer an agency discount. Please contact the Subscriptions department for more information: subscriptions@thoracic.org**



AJRCMB Mission Statement: To publish papers that report significant and original observations in the area of respiratory and lung cell biology. The focus of the Journal includes cellular, biochemical, molecular, developmental, genetic, and immunologic studies in health and in acute and chronic disorders related to the respiratory system and sleep.

- **Volumes for 2022:** 66 & 67
- **Subscription Period:** Anniversary
- **Term:** Monthly (12 times per year)
- **Format:** Online only
- **Archives:** Subscribers have online access to articles from 1989



AJRCCM Mission Statement: To publish the highest-quality original papers, reviews, and clinical trials in respiratory, critical care and sleep medicine to foster advances in translational research and clinical practice.

- **Volumes for 2022:** 205 & 206
- **Subscription Period:** Anniversary
- **Terms:** Bi-weekly (24 times per year)
- **Formats:** Online, online plus print or print only



Annals ATS Mission Statement: To publish original clinical, epidemiological, and health services research related to respiratory, sleep, critical care medicine, and population health. The journal also aims to educate pulmonary, sleep, and critical care providers about clinical care, and publish commentary on public health, environmental health, global health, health policy, and medical education/training relevant to ATS Members.

- **Volumes for 2022:** 19
- **Subscription Period:** Anniversary
- **Term:** Monthly (12 times per year)
- **Format:** Online only
- **Archives:** Subscribers have online access to articles from 2004

- **ATS Legacy Content includes articles from 1917 to 1997. Legacy Content Pricing:**
 Part I - 1917 – 1959 = \$3,500
 Part II - 1959 – 1997 = \$1,500
 Combo: 1917 – 1997 = \$4,500

Legacy Content

Institutions can purchase access to AJRCCM content dating back to its inception in 1917, when it was titled American Review of Tuberculosis. A separate one-time fee of \$1,500 - \$4,500 required for perpetual access. The Combo Legacy Content option provides permanent access to the complete set of volumes for the American Review of Tuberculosis, American Review of Tuberculosis and Pulmonary Disease, and American Review of Respiratory Disease (20,000 articles).

2022 ATS Institutional Subscription Rates

All institutions are able to access the journals online at www.atsjournals.org. Online accounts can be authenticated via IP to enable simultaneous access for multiple users. Subscription prices are tailored to fit the appropriate category and size of each organization. Multi-site and consortia prices are available. An agency discount will be applied to all orders received via a valid subscription agent. To receive a quote, please email: subscriptions@thoracic.org.

2022 Subscription Tier Restructure

All payments should be remitted in USD; full payment must be submitted before service can commence. 2022 rates are effective December 1, 2021.

HOSPITAL/HEALTH SYSTEMS

Tier	Institution	Price Online-Only	Price Print + Online (Int'l)	Price Print + Online (US)	Print Only
Tier 1*	Single hospital with up to 500 beds, non-research intensive	\$324.00	N/A	N/A	N/A
Tier 2*	Single hospital with 501 - 1000 beds, non-research intensive	\$946.00	N/A	N/A	N/A
Tier 3*	Single hospital with greater than 1,000 beds, research intensive	Call for pricing	N/A	N/A	N/A
Tier 4**	Treatment centers/Specialty Clinics	Call for pricing	N/A	N/A	N/A
Tier 5**	Health systems/networks with 2 or more hospitals	Call for pricing	N/A	N/A	N/A
Consortia		Call for pricing	N/A	N/A	N/A

* Pricing is subject to change based on research intensive

** Pricing based on number of beds/ type of institution

NOTE: Prices are subject to change without notice. Tier descriptions are for illustrative purposes only. Final tier assignment is subject to publisher's approval.

CORPORATE

Tier	Institution	Price Online-Only	Price Print + Online (Int'l)	Price Print + Online (US)	Print Only
Tier 1	Biotech, single site	\$2,154.00	N/A	N/A	N/A
Tier 2	* Biotech, multi- site	Call for pricing	Call for pricing	Call for pricing	N/A
Tier 3	Biotech, global	Call for pricing	Call for pricing	Call for pricing	N/A
Tier 4	Pharmaceutical, single site	\$2,216.00	N/A	N/A	N/A
Tier 5	* Pharmaceutical, multi- site	Call for pricing	Call for pricing	Call for pricing	N/A
Tier 6	Pharmaceutical, global	Call for pricing	Call for pricing	Call for pricing	N/A

* Pricing based on number of sites

** Prices are subject to change without notice. Tier descriptions are for illustrative purposes only. Final tier assignment is subject to publisher's approval.

See next page for academic and individual subscription rates.

ACADEMIC

Tier	Institution	Price Online-Only	Price Print + Online (Int'l)	Price Print + Online (US)	Print Only
Tier 1	Associate's granting colleges, or two-year special focus institutions. Professional membership organizations, industry trade organizations(staff only). Public libraries.	\$324.00	N/A	N/A	N/A
Tier 2	Baccalaureate granting college or master's granting university. Health policy or advocacy non-profit organization (staff). Medical specialty certification board (staff).	\$946.00	N/A	N/A	N/A
Tier 3	Government agency or ministry. Government research institute or network. Government health organization. National library. Doctoral granting university	\$2,278.00	N/A	N/A	N/A
Tier 4	Research institute. University with major biomedical research. University with a single medical school, with/ without affiliated hospital(s) that share e-resources	\$4,481.00	N/A	N/A	N/A
Tier 5	* University with two or more medical school, with/ without affiliated hospital(s) that share e-resources.	Contact subscriptions@thoracic.org	N/A	N/A	N/A
Consortia		Contact subscriptions@thoracic.org	N/A	N/A	N/A

* Pricing is based on student population and/or bed count

** Prices are subject to change without notice. Tier descriptions are for illustrative purposes only. Final tier assignment is subject to publisher's approval.

2022 Individual Subscription Rates

	Online Only	Online + Print (USA)	Online + Print (Int'l)†
AJRCCM	\$285.00	\$718.00	\$911.00
AJRCMB*	\$171.00	N/A	N/A
AnnalsATS	\$82.00	\$276.00	\$398.00

2022 Single-Issue Rates

Single-Copy Rates	AJRCCM	AJRCMB*	AnnalsATS
Domestic	\$50	\$100	\$50
International	\$60	\$120	\$60

Legacy Content

ATS Legacy Content:
includes articles from 1917 to 1997

Legacy Content Pricing:
Part I - 1917 – 1959
\$3,500

Part II - 1959 – 1997
\$1,500

Combo: 1917 – 1997
\$4,500

* Indicates on demand print availability. Please email subscriptions@thoracic.org for a quote.

† Due to postal problems, print subscriptions are no longer available in India. Please contact the Subscriptions department for more information: subscriptions@thoracic.org

Note: Our annual conference abstract book is no longer available for purchase in print. It is available from 2009 to present on the AJRCCM website (atsjournals.org/series/AJRCCM-conference).

To Order

Please contact our
Subscriptions department:

- Phone: 1-212-315-8687
- Fax: 1-212-315-6498
- Mail: 25 Broadway, 4th Floor, New York, NY 10004, USA
- For ICEDIS Orders:
subscriptionpayments@thoracic.org
- Email: subscriptions@thoracic.org

Place an Order

To place a subscription order for any ATS publication, please make sure to include the information outlined below. Payments by wire transfer/ACH or ICEDIS and credit card are accepted. If a wire transfer is required, please contact us at subscriptionpayments@thoracic.org

1. Name of publication

2. Institutional administrator information, including:

- a. First and last name, title
- b. Email address
- c. Telephone number

3. Institution information

- a. Name
- b. Website URL
- c. IP addresses (for subscription)
- d. Full mailing address

4. Institution type from one of the following:

- a. Academic
- b. Corporate
- c. Government
- d. Medical
- e. Public/nonprofit

Payment Terms

- **Prepayment:** Required for all orders. Payments can be made by wire transfers (contact for bank information), or by credit card. For prepayment sent via wire transfer, orders must be received in icedis or csv format and payment advice must accompany all orders
- **Accepted Credit Cards:** Visa, MasterCard, Discover, Amex, Diners, JCB
PLEASE DO NOT SEND CREDIT CARD INFORMATION VIA EMAIL.
- **Request credit card payment** link at subscriptions@thoracic.org
- **ALL payments with orders accompanied in ICEDIS/CSV** format must be sent to subscriptionpayments@thoracic.org
- **Shipping and Handling:** This is included in pricing for domestic and international orders.
- **Subscription Agencies:** A discount is given to subscription agencies. All orders received via agents must have end-user information; otherwise regular rates will be applied to the order. For more details, contact us at subscriptions@thoracic.org.
- **Proforma Invoices:** When requested, a proforma invoice or a price quote will be sent. Please contact subscriptions@thoracic.org.

Customer Service

- **Online Access:** All subscribers are responsible for activating their account at www.atsjournals.org. Please make sure to insert your email with the order form so that an ATS ID number can be sent to you and the account can be activated.
- **Missing Issues:** Please submit all claims to subscriptions@thoracic.org. Please be sure to include the ATS ID number, the order number (for agents), as well as the volume and issue number of claimed issue(s). Claims are only fulfilled for missing issues within three months of the publication date and can only be processed once, without exceptions.
- **Change of Address:** This request must be made in advance to ensure that the journals will be sent to the correct address. If the request is sent late, the journals will be sent to the newest address by the next issue date. Submit all change of address inquiries to subscriptions@thoracic.org with your ATS ID and new address information.
- **Refund Policy:** Subscriptions may be cancelled for a 100% refund if the request is received before the start of the subscription period. No refunds will be issued after the subscription has begun.

CONTACT US!

Mail: ATS Subscriptions

25 Broadway, Fl. 4

New York, NY 10004

Call: 212-315-8687

E-mail: subscriptions@thoracic.org

Exclusive Distributors

GREECE:

InterOPTICS

1 Ellis street & Vouliagmenis Avenue, Dafni, Athens 17235, Athens, Greece
 P: +30 210 9027203
 F: +30 210 9753403
 Email: ats@interoptics.com.gr

Coverage territory:

**Western Europe
 Nordic EU, DACH,
 CEE (EU and non-EU),
 SEE**

*Not included sales territory/
 countries/area: Portugal, Spain,
 Russia (& CIS), Israel and Turkey.*

INDIA:

Rhino International

Agencies will handle all institutional and individual subscriptions, and single-issue requests for users in the India territories.

Orders should be sent to:

Rhino International Agencies

74, Mahavir Centre Navi Mumbai Haharashtra India 400 703
 P: +91 22 2789 2627
 F: +91 22 2789 2568
 Email: ats@riabom.com

JAPAN:

Nankodo co. Ltd will handle all institutional, consortia, individual subscriptions, and single issue requests for users in Japan.

Orders should be sent to:

Nankodo co., Ltd.

42-6 Hongo 3-Chome Bunkyo-ku Tokyo 113-8410 Japan
 Email: journal@nankodo.com.jp

LATIN AMERICA, CARIBBEAN AND IBERO-AMERICA (PORTUGAL & SPAIN):

Dot Lib Information, LLC,

will handle all institutional and individual subscriptions, and single-issue requests for Latin America, the Caribbean and Ibero-America (Portugal and Spain).

Orders should be sent to:

Dot Lib Information, LLC

Email: info@dotlib.com

American Thoracic Society has appointed **iGroup (Asia Pacific) Ltd** as its exclusive representative in the following territories:

Country	iGroup Office Name	Contact	Email
Australia/New Zealand	iGroup (Australasia) Pty Ltd.	Chloe Lok	chloe.lok@igrouppanz.com
China	iGroup (Asia Pacific) Ltd.	Desmond Tang	desmond@igroup.com.cn
Hong Kong/Macau	Info Access & Distribution (HK) Ltd.	Brian Wu	brian@igroupnet.com
Indonesia	iGroup (Asia Pacific) Ltd.	Helwis	helwis@igroupnet.com
Malaysia/Brunei	Access Dunia Sdn Bhd	Ng Ching Guan	chingguan@accessdunia.com.my
Myanmar	iGroup (Asia Pacific) Ltd.	Jennifer Yong	jennifer.yong@igroupnet.com
Philippines	Libtech Source Philippines Inc.	Leah Sembrano-Bundalian	leah@igroupnet.com
Singapore	InfoHOST Pte. Ltd.	Susan Pey	susanpey@igroupnet.com
South Korea	IDC Asia (iGroup Korea)	Joseph Kim	josephkim@igroupkorea.com
Taiwan	VI Services Ltd.	Hill Chen	hill.chen@igrouptaiwan.com
Thailand	Book Promotion & Service Co. Ltd.	Kittipong Supkongdee	kittipong@book.co.th
Vietnam	iGroup (Asia Pacific) Ltd.	Quy	quy@igroupnet.com

- **New subscription orders are on a rolling renewal basis from the date of order processing. Issues published in the same year but prior to the start of the subscription must be purchased separately.**

- **Renewals extend from date of expiry so there is no interruption of service. (Orders received after December 31, 2021 will be on an anniversary schedule.**

- **Canada and Mexico are charged international pricing, not domestic.**

- **We offer an agency discount. Please contact the Subscriptions department for more information: subscriptions@thoracic.org**



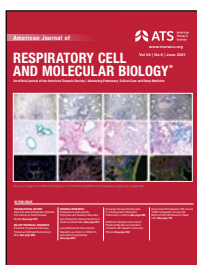
Annals ATS Mission Statement: To publish original clinical, epidemiological, and health services research related to respiratory, sleep, critical care medicine, and population health. The journal also aims to educate pulmonary, sleep, and critical care providers about clinical care, and publish commentary on public health, environmental health, global health, health policy, and medical education/training relevant to ATS Members.

- **Volumes for 2022:** 19
- **Subscription Period:** Anniversary
- **Term:** Monthly (12 times per year)
- **Format:** Online only
- **Archives:** Subscribers have online access to articles from 2004



AJRCCM Mission Statement: To publish the highest-quality original papers, reviews, and clinical trials in respiratory, critical care and sleep medicine to foster advances in translational research and clinical practice.

- **Volumes for 2022:** 205 & 206
- **Subscription Period:** Anniversary
- **Terms:** Bi-weekly (24 times per year)
- **Formats:** Online, online plus print or print only



AJRCMB Mission Statement: To publish papers that report significant and original observations in the area of respiratory and lung cell biology. The focus of the Journal includes cellular, biochemical, molecular, developmental, genetic, and immunologic studies in health and in acute and chronic disorders related to the respiratory system and sleep.

- **Volumes for 2022:** 66 & 67
- **Subscription Period:** Anniversary
- **Term:** Monthly (12 times per year)
- **Format:** Online only
- **Archives:** Subscribers have online access to articles from 1989

- **ATS Legacy Content includes articles from 1917 to 1997. Legacy Content Pricing:**
 Part I - 1917 – 1959 = \$3,500
 Part II - 1959 – 1997 = \$1,500
 Combo: 1917 – 1997 = \$4,500

Legacy Content

Institutions can purchase access to AJRCCM content dating back to its inception in 1917, when it was titled American Review of Tuberculosis. A separate one-time fee of \$1,500 - \$4,500 required for perpetual access. The Combo Legacy Content option provides permanent access to the complete set of volumes for the American Review of Tuberculosis, American Review of Tuberculosis and Pulmonary Disease, and American Review of Respiratory Disease (20,000 articles).

2022 ATS Institutional Subscription Rates

All institutions are able to access the journals online at www.atsjournals.org. Online accounts can be authenticated via IP to enable simultaneous access for multiple users. Subscription prices are tailored to fit the appropriate category and size of each organization. Multi-site and consortia prices are available. An agency discount will be applied to all orders received via a valid subscription agent. To receive a quote, please email subscriptions@thoracic.org.

2022 Subscription Tier Restructure

All payments should be remitted in USD; full payment must be submitted before service can commence. 2022 rates are effective December 1, 2021.

HOSPITAL/HEALTH SYSTEMS

Tier	Institution	Price Online-Only	Print
Tier 1*	Single hospital with up to 500 beds, non-research intensive	\$309.00	N/A
Tier 2*	Single hospital with 501 - 1000 beds, non-research intensive	\$878.00	N/A
Tier 3*	Single hospital with greater than 1,000 beds, research intensive	Call for pricing	N/A
Tier 4**	Treatment centers/Specialty Clinics	Call for pricing	N/A
Tier 5**	Health systems/networks with 2 or more hospitals	Call for pricing	N/A
Consortia		Call for pricing	N/A

* Pricing is subject to change based on research intensive

** Pricing based on number of beds/ type of institution

NOTE: Prices are subject to change without notice. Tier descriptions are for illustrative purposes only. Final tier assignment is subject to publisher's approval.

CORPORATE

Tier	Institution	Price Online-Only	Print
Tier 1	Biotech, single site	\$1,394.00	N/A
Tier 2	* Biotech, multi- site	Call for pricing	N/A
Tier 3	Biotech, global	Call for pricing	N/A
Tier 4	Pharmaceutical, single site	\$1,434.00	N/A
Tier 5	* Pharmaceutical, multi- site	Call for pricing	N/A
Tier 6	Pharmaceutical, global	Call for pricing	N/A

* Pricing based on number of sites

** Prices are subject to change without notice. Tier descriptions are for illustrative purposes only. Final tier assignment is subject to publisher's approval.

See next page for academic and individual subscription rates.

ACADEMIC

Tier	Institution	Price Online-Only	Print
Tier 1	Associate's granting colleges, or two-year special focus institutions. Professional membership organizations, industry trade organizations(staff only). Public libraries.	\$309.00	N/A
Tier 2	Baccalaureate granting college or master's granting university. Health policy or advocacy non-profit organization(staff). Medical specialty certification board (staff).	\$878.00	N/A
Tier 3	Government agency or ministry. Government research institute or network. Government health organization. National library. Doctoral granting university.	\$ 1,474.00	N/A
Tier 4	Research institute. University with major biomedical research. University with a single medical school, with/without affiliated hospital(s) that share e-resources	\$1,964.00	N/A
Tier 5	* University with two or more medical school, with/without affiliated hospital(s) that share e-resources.	Contact subscriptions@thoracic.org	N/A
Consortia	Contact subscriptions@thoracic.org	Contact subscriptions@thoracic.org	N/A

* Pricing is based on student population and/or bed count

** Prices are subject to change without notice. Tier descriptions are for illustrative purposes only. Final tier assignment is subject to publisher's approval.

2022 Individual Subscription Rates

	Online Only	Online + Print (USA)	Online + Print (Int'l)†
AJRCCM	\$285.00	\$718.00	\$911.00
AJRCMB*	\$171.00	N/A	N/A
AnnalsATS	\$82.00	N/A	N/A

2022 Single-Issue Rates

Single-Copy Rates	AJRCCM	AJRCMB*	AnnalsATS
Domestic	\$50	\$100	\$50
International	\$60	\$120	\$60

* Indicates on demand print availability. Please email subscriptions@thoracic.org for a quote.

† Due to postal problems, print subscriptions are no longer available in India. Please contact the Subscriptions department for more information: subscriptions@thoracic.org

Note: Our annual conference abstract book is no longer available for purchase in print. It is available from 2009 to present on the AJRCCM website (atsjournals.org/series/AJRCCM-conference).

Legacy Content

ATS Legacy Content:
includes articles from
1917 to 1997

Legacy Content Pricing:
Part I - 1917 – 1959
\$3,500

Part II - 1959 – 1997
\$1,500

Combo: 1917 – 1997
\$4,500

To Order

Please contact our
Subscriptions department:

- Phone: 1-212-315-8687
- Fax: 1-212-315-6498
- Mail: 25 Broadway, 4th Floor,
New York, NY 10004, USA
- For ICEDIS Orders:
subscriptionpayments@thoracic.org
- Email: subscriptions@thoracic.org

Place an Order

To place a subscription order for any
ATS publication, please make sure to
include the information outlined below.
Payments by wire transfer/ACH or
ICEDIS and credit card are accepted. If a
wire transfer is required, please contact
us at
subscriptionpayments@thoracic.org

1. Name of publication

2. Institutional administrator information, including:

- a. First and last name, title
- b. Email address
- c. Telephone number

3. Institution information

- a. Name
- b. Website URL
- c. IP addresses (for subscription)
- d. Full mailing address

4. Institution type from one of the following:

- a. Academic
- b. Corporate
- c. Government
- d. Medical
- e. Public/nonprofit

Payment Terms

- **Prepayment:** Required for all orders. Payments can be made by wire transfers (contact for bank information), or by credit card. For prepayment sent via wire transfer, orders must be received in icedis or csv format and payment advice must accompany all orders
- **Accepted Credit Cards:** Visa, MasterCard, Discover, Amex, Diners, JCB
PLEASE DO NOT SEND CREDIT CARD INFORMATION VIA EMAIL.
REQUEST CREDIT CARD PAYMENT LINK AT
subscriptions@thoracic.org
- **ALL payments with orders accompanied in ICEDIS/CSV format** must be sent to subscriptionpayments@thoracic.org
- **Shipping and Handling:** This is included in pricing for domestic and international orders.
- **Subscription Agencies:** A discount is given to subscription agencies. All orders received via agents must have end-user information; otherwise regular rates will be applied to the order. For more details, contact us at subscriptions@thoracic.org.
- **Proforma Invoices:** When requested, a proforma invoice or a price quote will be sent. Please contact subscriptions@thoracic.org.

Customer Service

- **Online Access:** All subscribers are responsible for activating their account at www.atsjournals.org. Please make sure to insert your email with the order form so that an ATS ID number can be sent to you and the account can be activated.
- **Missing Issues:** Please submit all claims to subscriptions@thoracic.org. Please be sure to include the ATS ID number, the order number (for agents), as well as the volume and issue number of claimed issue(s). Claims are only fulfilled for missing issues within three months of the publication date and can only be processed once, without exceptions.
- **Change of Address:** This request must be made in advance to ensure that the journals will be sent to the correct address. If the request is sent late, the journals will be sent to the newest address by the next issue date. Submit all change of address inquiries to subscriptions@thoracic.org with your ATS ID and new address information.
- **Refund Policy:** Subscriptions may be cancelled for a 100% refund if the request is received before the start of the subscription period. No refunds will be issued after the subscription has begun.

CONTACT US!

Mail: ATS Subscriptions

25 Broadway, Fl. 4
New York, NY 10004

Call: 212-315-8687

E-mail: subscriptions@thoracic.org

Exclusive Distributors

GREECE:

InterOPTICS

1 Ellis street & Vouliagmenis Avenue, Dafni, Athens 17235, Athens, Greece
P: +30 210 9027203
F: +30 210 9753403
Email: ats@interoptics.com.gr

Coverage territory:

**Western Europe
Nordic EU, DACH,
CEE (EU and non-EU),
SEE**

*Not included sales territory/
countries/area: Portugal, Spain,
Russia (& CIS), Israel and Turkey.*

INDIA:

Rhino International

Agencies will handle all institutional and individual subscriptions, and single-issue requests for users in the India territories.

Orders should be sent to:

Rhino International Agencies

74, Mahavir Centre
Navi Mumbai Maharashtra
India 400 703
P: +91 22 2789 2627
F: +91 22 2789 2568
Email: ats@riabom.com

JAPAN:

Nankodo co. Ltd will handle all institutional, consortia, individual subscriptions, and single issue requests for users in Japan.

Orders should be sent to:

Nankodo co., Ltd.

42-6 Hongo 3-Chome
Bunkyo-ku
Tokyo 113-8410 Japan
Email: journal@nankodo.com.jp

LATIN AMERICA, CARIBBEAN AND IBERO-AMERICA (PORTUGAL & SPAIN):

Dot Lib Information, LLC, will handle all institutional and individual subscriptions, and single-issue requests for Latin America, the Caribbean and Ibero-America (Portugal and Spain).

Orders should be sent to:
Dot Lib Information, LLC
Email: info@dotlib.com

American Thoracic Society has appointed **iGroup (Asia Pacific) Ltd** as its exclusive representative in the following territories:

Country	iGroup Office Name	Contact	Email
Australia/New Zealand	iGroup (Australasia) Pty Ltd.	Chloe Lok	chloe.lok@igrouppanz.com
China	iGroup (Asia Pacific) Ltd.	Desmond Tang	desmond@igroup.com.cn
Hong Kong/Macau	Info Access & Distribution (HK) Ltd.	Brian Wu	brian@igroupnet.com
Indonesia	iGroup (Asia Pacific) Ltd.	Helwis	helwis@igroupnet.com
Malaysia/Brunei	Access Dunia Sdn Bhd	Ng Ching Guan	chingguan@accessdunia.com.my
Myanmar	iGroup (Asia Pacific) Ltd.	Jennifer Yong	jennifer.yong@igroupnet.com
Philippines	Libtech Source Philippines Inc.	Leah Sembrano-Bundalian	leah@igroupnet.com
Singapore	InfoHOST Pte. Ltd.	Susan Pey	susanpey@igroupnet.com
South Korea	IDC Asia (iGroup Korea)	Joseph Kim	josephkim@igroupkorea.com
Taiwan	VI Services Ltd.	Hill Chen	hill.chen@igrouptaiwan.com
Thailand	Book Promotion & Service Co. Ltd.	Kittipong Supkongdee	kittipong@book.co.th
Vietnam	iGroup (Asia Pacific) Ltd.	Quy	quy@igroupnet.com